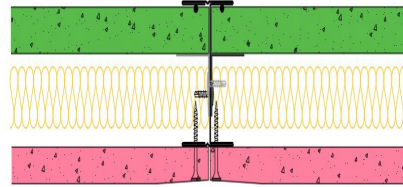


## **SE60-K-56(25) - SPEEDLINE System Data Sheet - Version V1 (24-10-23)**

SPEEDLINE 60mm 'I' Stud Shaft Encasement  
@600mm Ctrs, with Knauf 15mm Fire Panel,  
Knauf 19mm Coreboard, 25mm APR



### **System Performance Breakdown**

Fire Resistance:

BS476 Part 22:1987:

Test Ref & Date or Applied Ref & Report:

Max Height:

Thickness:

Duty Grade: BS 5234: Part 2:1992:

Sound Insulation:

**60/60 FromShaftSideOnly** Minutes (Integrity/Insulation).

**BRE 303713 - BRE Report P102396-1012B**

**Refer to Speedline Specification Clause**

**77 mm.** (At Base Track, Excluding Finishes)

**Heavy - Annexes A-F**

**42 R<sub>w</sub>dB**, Date Tested or Assessed Against -

TESTED AT ONE OF THE UKAS  
ACCREDITED LABORATORIES  
BELOW

B.T.C  
(H-Ref on Graph)



B.R.E



AIRO



S.R.L

